

How to register as a producer of packaging: guidance notes



The Producer Responsibility Obligations (Packaging Waste) Regulations 2007 (as amended)



Please read these guidance notes carefully before you register.

Contents

1	Introduction	
2	The regulations	
3	Your producer responsibility obligations	
4	What you need to do next	
5	Registering your business with us	
6	Filling in the registration form	
	Step 1: Contact information	
	Step 2: Application information	
	Step 3: Details of subsidiaries, licencees and tenants	
	Step 4: Detail your packaging activities	
	Step 5: Specify the amounts of packaging you handle	
		Step 6: Review your packaging obligations
		Step 7: Upload any supporting documents
		Step 8: Data inconsistencies
		Step 9: Submit your data
		Step 10: Fees
7	Recovery and recycling obligations	
8	Examples of obligation calculations	
9	Meeting your recovery and recycling obligations	
10	Joining a compliance scheme	
11	Monitoring and enforcement	
12	Fees and charges	
13	Sending us your application	
14	Further information	

1 Introduction

The UK produces about 10 million tonnes of packaging waste every year. The European Directive on Packaging & Packaging Waste (94/62/EC) was introduced to prevent this waste from going to landfill. The Producer Responsibility Obligations (Packaging Waste) Regulations 2007 (as amended) apply this aim in the UK and ensure that producers of packaging:

- reduce the amount of packaging waste produced;
- re-use packaging wherever possible;
- increase the amount of packaging recovered and recycled;
- achieve a more sustainable approach to dealing with packaging waste;
- reduce the amount of packaging waste going into landfill; and
- meet the UK recovery and recycling targets set in the European Directive.

List of terms

NPWD – National Packaging Waste Database. The website used by businesses and the environment agencies for registrations, accreditations and data handling.

Packaging – means all products made of any materials of any nature to be used for the containment, protection, handling, delivery and presentation of goods, from raw materials to processed goods, from the producer to the user or the consumer.

Packaging materials – any materials used in the manufacturing of packaging including raw materials and processed materials that will become packaging.

Recovery – includes recycling, energy recovery and composting.

Recycling – is reprocessing waste materials into new materials or products.

2 The regulations

You should use this section to help you decide if the regulations apply to you. If they do you are an ‘obligated producer’.

You are an obligated producer if your business:

- has a turnover of more than £2 million (based on your last set of accounts); and
- handled more than 50 tonnes of packaging materials or packaging in the previous calendar year.

Handle packaging means:

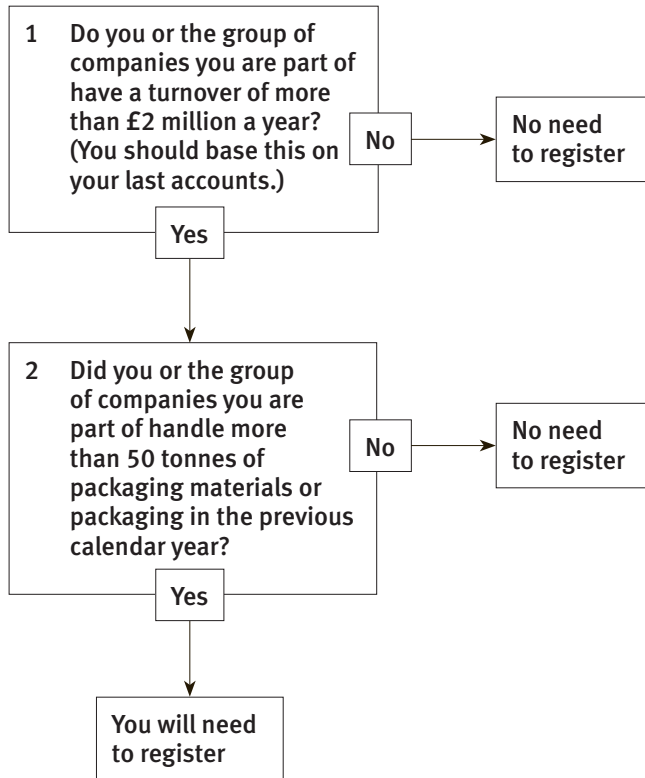
- carrying out one or more of the activities listed in the table below or
- have these activities carried out on your company’s behalf
- owning the packaging on which the activities are carried out, and
- supplying packaging or packaging materials at any stage in the chain or to the final user of the packaging.

Description of activities

Raw material manufacture	producing raw materials for packaging manufacturing
Packaging conversion	converting raw materials into packaging
Packing/filling	putting goods in packaging or putting packaging around goods
Selling	supplying packaging to the end user

Importing	importing packaged goods or packaging materials (including crates and pallets) from outside the UK, as well as any raw materials that will become packaging for example plastic pellets that go to make bottles
Service provider	a business that supplies packaging by hiring it out or lending it

Do the regulations apply to you?



3 Your producer responsibility obligations

If you are an obligated producer you must:

- register with the Environment Agency or the Scottish Environment Protection Agency (SEPA) or join an approved compliance scheme and provide information on the packaging you handle;
- know and understand your packaging obligations (the amount of packaging waste in tonnes that you will be responsible for recovering or recycling);
- recover and recycle set amounts (in tonnes) of packaging waste (see ‘Meeting your recovery and recycling obligations’ in section 9);
- provide evidence that recovery or recycling (or both) has been carried out (see ‘Meeting your recovery and recycling obligations’ in section 9);
- where the main activity performed by the producer is that of seller, you must fulfil your consumer information obligations (see ‘Consumer information obligations’ in section 6); and
- provide an operational plan where your obligation is more than 500 tonnes.

Small producers

If you have a turnover between £2 million and £5 million you can choose to register as a small producer and you must work out your obligation using the allocation method (see section 8).

If you have a turnover below £2 million and are obligated because you are part of a group of companies you can register as a small producer.

Group registrations

If you are a holding company and you have subsidiaries that carry out a packaging function, you can register as a group of companies. If you register as a group of companies you must consider:

- the total amount of packaging (in tonnes) your group handles;
- your combined turnover including all subsidiaries (which handle packaging);
- the amount of packaging (in tonnes) allocated to any of your subsidiaries which handle packaging and have chosen to be ‘small producers’.

4 What you need to do next

You can:

- register directly with us; or
- join an approved compliance scheme.

You must be registered or a member of a compliance scheme by **7th April** each year.

This guidance is for producers who register with us to help them meet their obligations. If you want to join a compliance scheme you must follow that scheme’s guidance (see ‘Joining a compliance scheme’ in section 10).

5 Registering your business with us

You must register online using the National Packaging Waste Database (NPWD). For further details see our guidance note ‘How to register as a producer of packaging using the National Packaging Waste Database’, which you can find online at www.environment-agency.gov.uk/packaging, or call us on 08708 506506. When you register on NPWD, your obligation will be automatically calculated from the data you enter and you will also be able to manage the recovery and recycling evidence that you obtain.

You must pay the correct registration fee when you register (see ‘Fees and charges’ in section 12). NPWD cannot accept payment of fees online, **so in all cases you must pay your fees by cheque, BACS or credit or debit card by 7 April.**

6 Filling in the registration form

When you register online using the NPWD, you will be taken through a series of 10 steps.

- Step 1 Fill in or confirm your contact details
- Step 2 Provide your details (if you are registering for you or on behalf of your company)
- Step 3 Give details of any subsidiaries, licensees or tenants
- Step 4 Give details of your packaging activities
- Step 5 Enter the amounts of packaging you handle
- Step 6 Review your packaging obligations
- Step 7 Upload any supporting documents
- Step 8 Review and sort out any inconsistencies in your information
- Step 9 Send your online information
- Step 10 Pay the registration fee

Guidance is provided online to help you in this process and the system will also work out your recovery and recycling obligations and registration fee.

If you have registered on NPWD before, your information will be copied into your new registration. You'll need to check it and verify that it is still correct before sending.

Step 1: Contact information

This is where you enter the contact details of your business, including the person we can contact to discuss the registration. Please also let us know your main site address if your registered office is not the same place that either your packaging activities occur or your packaging data is collated.

Step 2: Application information

We need to know various details about your business including:

- your business trading name and company name – if these are different;
- the address of your registered office and company registration number;
- the SIC code for your business (you can find this on www.statistics.gov.uk);
- your turnover from the last set of audited accounts (if you do not have audited accounts you must provide us with other evidence of your turnover); when applying for a group registration you must tell us the combined turnover of the group.
- what kind of producer you are (you should tick all the boxes that apply to you);
- if you are a licensor or pub-operating company;
- how much packaging you handled in the previous calendar year (if your business has an obligation of more than 500 tonnes you also need to send an operational plan (see below) with your registration;

Step 3: Details of subsidiaries, licencees and tenants

Group registrations

If you are a holding company and you are registering as a group you must give us details of all your subsidiaries, including company registration number, address and contact details. We also need to know the SIC code, turnover and main packaging activity for each subsidiary and you must tell us if either you or any subsidiaries are small producers by ticking the box provided.

If you are a group of companies (a holding company and one or more subsidiaries) you must combine your yearly turnovers and packaging you handle to see whether you go above the financial and tonnage thresholds for registration. You then have a number of options for registering.

- You (the holding company) and one or more subsidiaries can either register together, or individually.
- If you (the holding company) are not a producer, but your subsidiaries are, you can still register on your subsidiaries' behalf.
- You (the holding company) can register as a group in which one or more subsidiaries use the allocation method (if the subsidiary has a turnover of less than £5 million). The rest of your subsidiaries can combine their information. The allocations and calculated obligations will be added together to give us the overall obligation for the group.

Licensors and pub-operating companies

If you are a licensor or pub operating company you must give us the addresses and contact details for all your licensees or tenants.

Step 4: Detail your packaging activities

This is an important part of the application known as the 'data form'. All the data relates to the packaging and activities from the previous calendar year. You need to tell us about your packaging activities, the packaging you handle, how you worked out the packaging you handle as well as information on the material types and tonnes of packaging you carried out different activities on and supplied to another person.

- Tell us about your main and secondary packaging activities. For example, your main activity might be to sell packaging but you might also import packaging.
- Tell us how you worked out how much packaging you handled in the previous year.

Step 5: Specify the amounts of packaging you handle

Your recovery and recycling obligations for the current year are calculated on the figures you enter in Tables 1 to 3b. Make sure you fill in the tables as accurately as possible or your obligations may be wrong. Carefully follow the online instructions which tell you what to include in each box.

Small producers who are using the allocation method do not enter any data in this step. Your obligation is based on the turnover you provided in Step 2 and your main material.

What to include

Your information and calculations should include:

- the amount (in tonnes) of packaging which you supply to the next stage in the packaging chain;
- any packaging you import and any packaging around goods you import; and
- materials you or another company exports which you have the proper documents for (you should tell us about these in tables 1, 2a and 2b).

Do not include the following

- Any packaging that has been used before unless it is imported; and
- process waste.

Step 6: Review your packaging obligations

This section shows your recovery and recycling obligations based on the data you entered in the previous steps.

Table 4a shows your total recovery obligation as well as the maximum amount of recovery only PRN/PERNs that you may purchase to meet your obligations. If the recycling target for your main material is greater than the recovery target your maximum recovery figure could be zero.

Table 4b shows your recycling obligation by material.

Table 4c shows the small producer's material specific recycling obligation where this applies.

Table 4d shows the total group material specific recycling obligations where a holding company or group of companies have registered using a mix of the calculated and allocation methods.

For information on how the obligations are calculated see section 8.

Step 7: Upload any supporting documents

This step has an upload function for you to send us any supporting information or documents. You will be prompted to upload an operational plan and documents to support your consumer information obligations if these apply to your business.

Operational plans

If you have an obligation of more than 500 tonnes you must send an operational plan with your first application. It should deal with all the requirements in Schedule 3 Part 3 of the regulations. You can find detailed guidance on operational plans in guidance note WMP2 on our website at www.environment-agency.gov.uk/packaging.

In future years you should send a revised operational plan by 31 January.

Consumer information obligations

If your main activity is selling packaging, you must give your customers information about:

- the return, collection and recovery systems available to them;
- their role in reusing, recovering and recycling packaging and packaging waste;
- what the symbols and icons on packaging mean;
- how to get copies of waste strategy guidance (see 'Further information' in section 14).

We will ask you to show us how you plan to meet these requirements.

Step 8: Data inconsistencies

This section will show you if there are any inconsistencies in the data you have provided, for example, if you have exported material that you haven't included in Table 1. Please review any data highlighted and amend if necessary.

Step 9: Submit your data

Once you have completed all the steps you will need to submit your data in order to be registered for the year. The regulations state that only an 'approved person' can submit a producer's registration. NPWD has a system of electronic signatures and in order for an approved person to be able to access the website and sign the application to register one of the following needs to complete an authorised signatory form:

- a director or company secretary
- a partner
- a sole trader.

This will then authorise that person to access NPWD and submit the registration on behalf of the company.

Step 10: Fees

After submitting your registration form and data you need to pay the registration fee. Your fee will be automatically calculated based on the information you have provided. You can print an invoice and submit your payment. See section 12 for further information on fees and charges.

What to do now

Once your registration form and data has been submitted you'll receive an email to confirm that it has been received. You will receive a further email to confirm whether your application has been accepted or rejected. If your application has been rejected you will need to contact your environment agency to find out what you need to do next. If your application has been accepted you should take steps to ensure you can fulfil your recovery and recycling obligations for the year. See section 9 on how to get and submit evidence of recovery and recycling.

You can view, save and print a copy of your completed registration form in pdf format. Click the link at the top of the Submission for Registration page.

7 Recovery and recycling obligations

If you are a small producer your obligations will be an allocation based on your turnover to the nearest £10,000. See section 8 'Examples of obligation calculations'.

For all other producers your recovery and recycling obligations are based on the:

- amount of packaging and packaging material you handled in the previous year;
- activity you carried out on this packaging material;
- UK material specific recycling target; and
- UK recovery target.

In order to fulfil your obligations you must meet the material specific recycling obligations as well as the overall recovery obligation. Your total recycling target is included in your overall recovery target, you do not add the two separately. Your recycling target must make up at least 92% of your recovery target.

Your obligation for the current year is based on the information you enter in tables 1 to 3b. If you do not fill out the tables correctly, you will not work out your recovery and recycling obligations correctly. Follow the instructions online, which tell you about the information you should enter into each table.

Recovery and Recycling targets in the UK can change every year. They are set by government and written into the regulations.

The current percentage targets are as follows:

Material	2011	2012
Paper	69.5	69.5
Glass	81	81
Aluminium	40	40
Steel	71	71
Plastic	32	32
Wood	22	22
Total Recovery	74	74
Minimum recycling	92	92

Please note that these targets could be changed by new legislation. NPWD includes all the current targets and will automatically calculate your obligations.

Recycling target

You must recycle at least of 92% of your total recovery obligation. This represents your **total recycling obligation**. You must provide proof of what you recycle. For example, if you have an obligation (see ‘Working out your activity obligations’) of 100 tonnes, you must give us evidence to show you have recycled 92 tonnes. You can then provide evidence of either recycling or recovery for the remaining eight tonnes.

Within the 92% recycling obligation, you must meet your material specific recycling obligations. These are based on the recycling targets for the UK for each material, multiplied by your **activity obligation** (see below for how to work this out).

The total amount of your recycling obligation for specific materials may be less than your **total recycling obligation**. In this case you can make up the difference through any type of material recycling evidence.

8 Examples of obligation calculations

There are six activities with the following obligations.

Activity obligation

- 1 For raw material manufacturing – the amount handled x 6% x the target for the UK.
- 2 For conversion – the amount handled x 9% x the target for the UK.
- 3 For packing/filling – the amount handled x 37% x the target for the UK.
- 4 For selling – the amount handled x 48% x the target for the UK.
- 5 For importing – the amount of material imported x the ‘rolled up’ activity % (the exact percentage depends what activities were carried out on the material before you imported it) x the target for the UK.
- 6 For a service provider (someone who hires out or lends packaging) – the amount handled x 85% x the target for the UK.

An example of recovery and recycling obligation calculations

A raw material manufacturer has handled 400 tonnes of packaging in the previous year.

The activity percentage for raw material manufacturer is 6%.

- 1 Recovery obligation:
 $400 \text{ tonnes} \times 6\% \times 74\% = 17.76$ (rounded up = **18 tonnes**)
- 2 The manufacturer must recycle at least 92% of this amount to meet their total recycling obligation.
 $18 \text{ tonnes} \times 92\% = 16.56$ (rounded up = **17 tonnes**)
 Of the 400 tonnes the manufacturer handled, 200 were aluminium and 200 were steel. The aluminium recycling target is 40% and the steel recycling target is 71%.
- 3 To calculate the aluminium recycling obligation:
 $200 \text{ tonnes} \times 6\% \times 40\% = 4.8$ (rounded up = **5 tonnes**)
- 4 To calculate the steel recycling obligation:
 $200 \text{ tonnes} \times 6\% \times 71\% = 8.52$ (rounded up = **9 tonnes**)
- 5 Recycling obligations for specific materials
= 5 + 9 = 14 tonnes

The total recycling obligation for this manufacturer is **17 tonnes**. The manufacturer can choose to make up the difference of **3 tonnes** by recycling any material.

Evidence

In this example you would have to provide recycling evidence as follows:

- Steel – 9 tonnes
- Aluminium – 5 tonnes
- Any material – 3 tonnes
- Total recycling evidence = 17 tonnes
- Overall recovery = 1 tonne (this could be recovery or recycling evidence).

Glass handlers

In the following example, consider that the manufacturer only handles glass. The glass recycling target is 81%.

$400 \text{ tonnes} \times 6\% \times 81\% = 19.44$ (rounded down is **19 tonnes**)

In this example, the total recycling obligation is higher than the overall recovery obligation. This is because the glass recycling target is more than the recovery target. In these circumstances the manufacturer would need to meet their total obligation with evidence of glass recycling.

Allocation method for small producers

If you have a turnover of less than £5 million you can choose to register as a small producer. As a small producer you do not need to work out your obligation as detailed above. The recycling obligation is based on turnover and the main material type you handle.

The recycling allocation for 2011 and 2012 is 29.

The obligation is calculated by

$$\frac{\text{Your turnover}}{1,000,000} \times 29 = \text{your obligation in tonnes.}$$

You will need to get evidence of this tonnage in your predominant material by weight.

Example 1

A small producer has a turnover of £2,750,000. Most of the packaging they handle, by weight, is paper.

$$\frac{2,750,000}{1,000,000} \times 29 = 79.75$$

The small producer should round this amount up to 80 tonnes. Their obligation is 80 tonnes of paper evidence.

Example 2

A small producer has a turnover of £4,210,000. Most of the packaging they handle, by weight, is steel.

$$\frac{4,210,000}{1,000,000} \times 29 = 122.09$$

The small producer should round this amount down to 122 tonnes. Their obligation is 122 tonnes of steel evidence.

Reducing packaging

Reducing the amount of packaging you produce in the first place or increasing the amount of reusable packaging that you use can reduce the financial effect of the regulations on your businesses by, for example, making savings on your production costs. We can advise you about schemes in your area to help you reduce the amount of waste your business produces. You can also get advice from Wrap, Envirowise and Business Link, see section 14 ‘Further information’.

9 Meeting your recovery and recycling obligations

You do not have to recover and recycle any of the packaging which your business handled or supplied. Accredited reprocessors and exporters will collect and recycle packaging waste on your behalf, and then you can buy evidence of this recycling. Accredited reprocessors and exporters will issue a packaging recovery note (PRN) or a packaging export recovery note (PERN) for every tonne that they recycle or recover in a year. These PRNs and PERNs are issued through the NPWD. You cannot buy or sell evidence on NPWD, the database will only generate, track and record PRN/PERNs. All commercial transactions are outside of the system. You can contact accredited reprocessors or exporters yourself to arrange to buy evidence or you could use a broker. A public register of all accredited reprocessors and exporters is available to view on NPWD. You do not need to log-in to view these records. Public registers are in the toolbar on the left.

<http://npwd.environment-agency.gov.uk>

On your NPWD homepage you can view your obligation as well as how much evidence you have acquired and the amount outstanding.

Certificates of Compliance

At the end of each year, you must send us a Certificate of Compliance (CoC) to tell us whether or not you have purchased all the evidence to meet your obligations. You must send us this by 31 January after the compliance year. Your CoC is generated by NPWD based on your obligation and the amount of evidence you have bought. You will need to check that you have accepted all your evidence and your authorised person will need to submit the CoC. You can upload any additional or supporting information, for example a covering letter. You may also view, save and print your CoC in pdf format for your own records.

10 Joining a compliance scheme

If you decide not to register with an environment agency, you must join a compliance scheme in order to meet your obligations. A compliance scheme:

- takes on your legal obligations;
- provides an operational plan on behalf of its members;
- is legally responsible for providing evidence of recovery and recycling for all its members;
- will send a certificate of compliance on behalf of its members.

Producers must be registered with us by 7 April each year, although compliance schemes have until 15 April to send us their members' details and data. You must ensure you have supplied your scheme with all the information and fees they require so that they can register you by the deadline. Please contact your scheme for further information as they may have different cut-off dates.

You are still responsible for providing the scheme with accurate information.

A current list of compliance schemes can be found in the public register on NPWD. You do not need to log-in to view these records.

<http://npwd.environment-agency.gov.uk>

11 Monitoring and enforcement

We will provide advice and answer any specific questions you have about the regulations. We may take action against you if we think you have not carried out your obligations, for example by:

- not registering or joining a scheme by the registration date;
- not meeting your recovery or recycling obligations; or
- providing false and misleading information.

You may be prosecuted if you do not keep to the regulations.

Civil sanctions

In 2010 new legislation was introduced that allows the Environment Agency to issue civil penalties rather than take criminal court cases. Instead of taking a prosecution for lesser offences we will be able to do the following:

- Fixed Monetary Penalty – a low level fine fixed by legislation that the regulator may impose for a specified minor offence;
- Variable Monetary Penalty – a proportionate monetary penalty which the regulator may impose for a more serious offence;
- Enforcement Undertaking – an offer, formally accepted by the regulator, to take steps that would make amends for non-compliance and its effects.

These alternative sanctions are only available in England and Wales.

Free riders

If you have information on a non-compliant business that you want to pass on to us, for example a business you believe should be registered (non-registered companies are called "free riders") please let us know on our freephone number **0800 023 2090**. This number links to an answer machine so you do not have to speak to us directly. Alternatively you can use our contact email or postal address in section 14.

12 Fees and charges

Applications to the Environment Agency or SEPA

When you send us your application, you have to pay us a fee for processing it. If you do not send us the correct fee, we cannot process your application.

We cannot refund your registration fee if:

- we refuse or cancel your application; or
- you no longer need to be registered.

Individual registrations with agencies

You must pay a registration fee of £776.

Small producers

You must pay a registration fee of £562.

Group registrations with agencies

Producers must pay a fee of £776 plus a fee for each subsidiary in the group registration at the following rates.

- £180 each for the first four subsidiaries
- £90 each for the next five to 20 subsidiaries
- £45 each for the subsidiaries after that (see the table on the next page)
- You do not need to pay a fee for small-producer subsidiaries

- If a group of companies has a combined turnover of less than £5 million, the holding company can register the group as a small producer and pay a fee of £562

Fee for a holding company (including fees for subsidiaries)

Number of subsidiaries	Fee
1	£956
2	£1136
3	£1316
4	£1496
5	£1586
6	£1676
7	£1766
8	£1856
9	£1946
10	£2036
11	£2126

Number of subsidiaries	Fee
12	£2216
13	£2306
14	£2396
15	£2486
16	£2576
17	£2666
18	£2756
19	£2846
20	£2936
21	£2981
22	£3026

Data resubmission

If you need to give us or the scheme you are registered with revised information during the registration year (for example, following a visit from us to monitor your business) you will have to pay an extra £220.

Applications to an existing compliance scheme

When you apply to an existing compliance scheme, we will charge that scheme for your registration.

Individual company registrations

The scheme will have to pay a fee of £564.

Small producers

The scheme will have to pay a fee of £345.

Group registrations

The holding company will have to pay an initial fee of £564 plus a fee for each subsidiary included within the group at the following rates.

- £180 each for the first four subsidiaries
- £90 each for the next five to 20 subsidiaries
- £45 each for the 21st subsidiary and any after that

13 Sending us your application

You must register by 7 April each year.

If you are a producer and your registered head office or main place of business is in Scotland you should register with the Scottish Environment Protection Agency (SEPA). If you are a producer and your registered head office or main place of business is in England or Wales you should register with the Environment Agency.

Northern Ireland has a separate set of regulations and a different fee structure. Contact the Northern Ireland Environment Agency for further information.

Letting us know about changes

When you sign your declaration, you agree to let us know within 28 days of any changes:

- in your circumstances relating to your registration; or
- to the information you have sent us with your application.

You must cancel your registration if you become a member of a registered compliance scheme or stop being a producer in the year.

Financial difficulties

All businesses who experience financial difficulties are required to inform us as soon as possible after they become aware of problems. Please tell us about any of the following:

- A winding up order has been made or a resolution for voluntary winding up has been passed;
- A determination for a voluntary winding up has been passed;
- A receiver or a manager of the company or limited liability partnership undertaking has been duly appointed;
- Its undertaking has entered administration;
- A voluntary arrangement proposed for the purpose of Part 1 of the insolvency Act 1986(a) has been approved.

14 Further information

Publications

Producer Responsibility Obligations (Packaging Waste) Regulations 2007

Producer Responsibility Obligations (Packaging Waste) Amendment Regulations 2010

Published by The Stationery Office

Telephone : 0870 600 5522 to order a copy of the regulations

Website: www.tso.co.uk/bookshop

Advice and information

Regulators

Environment Agency (for England and Wales)

Producer Responsibility Regulatory Services

Quadrant Two

99, Parkway Avenue

Sheffield

S9 4WF

Telephone: 08708 506 506

Fax: 0114 262 6697

Email: packaging@environment-agency.gov.uk

Website: www.environment-agency.gov.uk/packaging

Scottish Environment Protection Agency (SEPA)

Producer Responsibility Unit

Erskine Court

The Castle Business Park

Stirling

FK9 4TR

Phone: 01786 457 700

Fax: 01786 446 885

Website: www.sepa.org.uk

Northern Ireland Environment Agency (NIEA)

Producer Responsibility Unit
Klondyke Building
Cromac Avenue
Gasworks Business Park
Lower Ormeau Road
Belfast
BT7 2JA
Telephone: 028 9056 9338
Fax: 028 9056 9376
Website: www.ni-environment-agency.gov.uk

Department for Environment, Food and Rural Affairs (Defra)

Producer Responsibility Unit
Zone 6/F5
Ashdown House
123 Victoria Street
London
SW1E 6DE
Phone: 020 7082 8780
Fax: 020 7082 2470
Website: www.defra.gov.uk/environment/waste/topics/packaging/index.htm

Wrap/Envirowise

Envirowise can help you implement resource efficient practices within your business. Not only are these practices proven to cut costs and increase your profit, they are also beneficial for the environment. They can also provide specific advice about reducing packaging and optimising the packaging you do use.

Website: <http://envirowise.wrap.org.uk>
Freephone helpline: 0800 585 794

The Industry Council for Packaging and the Environment

SoanePoint
6 - 8 Market Place
Reading
Berkshire
RG1 2EG
Phone: 0118 925 5991
Fax: 0118 925 5888
Email: info@incpen.org
Website: www.incpen.org

Incpem promotes the benefits of packaging and represents the interests of over 60 major companies from all parts of the packaging chain. It gives general guidance about packaging and the environment.

